



# *Falcon Chronicles*

## iLEAD Agua Dulce High School

### Mark Your Calendars



**F 11/11/22**

No School, Veterans Day

**S & S 11/12-13**

BruinMUN

**11/21-11/25**

Fall Break

**W 12/07/22 9:00 AM**

iSupport Meeting

**M-F 12/12-12/16**

Spirit Week!

**F 12/16/22**

Winter Program

**12/19-01/09**

Winter Break

### Messages

[Talk to your learner about the status of their online course, they should be beginning Block 12.](#)



### Musts

[Check brightspace for learner progress in each course.](#)

### *Celebration of Gratitude*

**November 18, 2022**

Please join our school community in celebrating gratitude! Facilitators will be creating their own expression of gratitude in grade levels or combined grade levels.

8th-10th will show gratitude to our custodial staff by creating a gift basket and writing a letter of appreciation.

[Please send any items you would like for us to include in the gift baskets for the custodial staff by Wednesday, Nov 16, 2022 so that we have time to arrange the baskets.](#)

# Contemporary World Cultures and Geography & Integrated Science II

*Dr. Armine Movsisyan Berg*



## Advisory Connections

**Mindful Monday** → Practiced meditation of learner choice

**TedTalk Tuesday** → Maddie led a Socratic about discoveries in neuroscience which highlight human behavior choices

**Wellness Wednesday** →

**Thoughtful Thursday** →

*Learner Outcomes Focus: Self-Control - Zest - Social Intelligence*

*Habits Focus: #2 Sharpen Your Saw*

## Grade 9

### **Driving Questions**

**Humanities** → *How can I design a self-empowering high school experience that prepares me to “show-up” in school and life?*

**STEAM** → *How can our understanding of mycology support wellness for humanity and our earth?*

This week developed the my story project and reflected on our understanding of mycology from last weeks meeting with experts from the field.

## Grade 10



**Driving Question** - *How can I use my 10th Grade experience at iADHS to help discover who I am and who I hope to become?*

This week we continued our journey around the world by focusing on our familiarity with South America.

## International Issues - Globalization - Public Policy

This week we prepared to go to Model United Nations at UCLA by compiling research binders, writing speeches and conducting a simulation of a conference debate.

Our delegation resource folder is attached below:

**Shared Folder** → [BruinMUN November 12-13, 2022](#)

## *Table Talk Wonders*



**How many countries are there in the world? How did that come to be?**



**iLEAD  
Online**

**VAPA & Language  
Complete Block 11**

## *Afterschool*

**D&D**

**Tu. 3:30-4:30 pm**

**MUN**

**Th. 3:30-4:30 pm**

[Link to iADHS Learner Schedule](#)

## *Wishlist*

1. Hammocks for the outdoor patio.
2. Outdoor chairs for the outdoor classroom.
3. Post-its - poster size and lined regular size.

# English Language Arts



*Mrs. Elsa Williamson*



## 9th & 10th Grade

Learners are now in full swing working on their project and presentations! Class presentations are on November 15th for 9th grade and November 17th for 10th grade. These will take place during our regular class time. How will the learners demonstrate their understanding of empathy? How will they make a connection to their literary text?

## Table Talk Wonders



Let's spend some time working on our Brightspace course.

How can we learn empathy through literature?



# Integrated Mathematics

## Mrs. Kristan Hinze

## Grade 9 & 10

### Math Support

After-School Math Workshops are happening! If your learners need additional support, this is a great opportunity for them.

10th Grade: Mondays from 3:15-4:15pm (November 14 & 28, December 5 & 12)

9th Grade: Wednesdays from 3:15-4:15pm (November 14 & 28, December 5 & 12)

### Absent?

When learners are absent, they are responsible for going into Google Classroom to see what they missed.

### Uploading Assignments

When learners complete assignments, they need to make sure they take a picture of the completed and corrected assignment. Picture must be uploaded as a PDF or in a Google Doc, they should not upload the picture by itself (the quality is not good and I cannot see their work).

## Grade 9 & 10 Integrated Math 1

Khan Academy - Learners have until end of the day, Friday, November 11th to complete their 680 minutes of Khan Academy. The learners asked me to give them time tomorrow, because many need the time. There will be no further extensions and learners will receive a zero on the assignment if they do not have it completed.

This week we worked on distributive property and combining like terms. Learners need to make sure they are completing all steps necessary so that they don't make simple mistakes.

## Grade 10 Integrated Math 2

Khan Academy - Learners have until end of the day, Friday, November 11th to complete their 630 minutes of Khan Academy. The learners asked me to give them time tomorrow, because many need the time. There will be no further extensions and learners will receive a zero on the assignment if they do not have it completed.

Learners began working on Algebraic Proofs this week. This is a great way for learners to review equations.

## Table Talk Wonders



## How is math applied in life?

## After-School Workshops

**Learner Ambassador Program**  
Every Tuesday  
3:15 - 4:15  
November 15 and 29  
December 6 and 13

**Math Support**  
10th Grade: Mondays  
November 14 and 18  
December 5 and 12

9th Grade: Wednesdays  
3:15-4:15  
No meeting on November 16  
Workshop will meet:  
November 30  
December 7 and 14

For all after-school workshops, learners should be committed to attending regularly. We understand if a one-time appt or emergency occurs and the parent communicates with the facilitator.

## Contact Mrs. Hinze

[kristan.hinze@ileadaguadulce.org](mailto:kristan.hinze@ileadaguadulce.org)



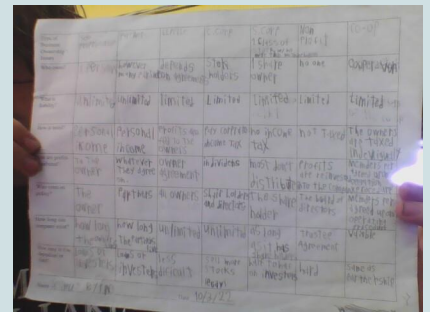
# Introduction to Entrepreneurship CTE

*Ms. Veronika Dean*

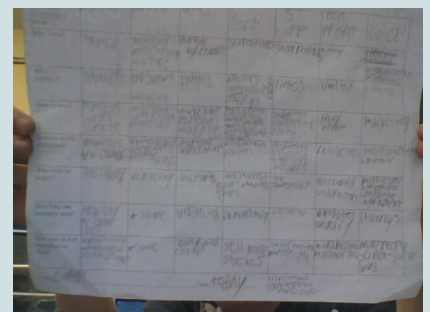
9th & 10th

Learners continue to disseminate the driving question for Unit 1. This week they completed a table and learned about the various forms of business ownership. It would be great if learners could interview people who own these various types of businesses. Please contact me at [veronika.dean@ileadaguadulce](mailto:veronika.dean@ileadaguadulce). Learners should be starting on the main presentation for the driving question. Through assignments and resources provided in Google Classroom they can begin to design their presentation on personal traits and the roles entrepreneurs play in society. Upcoming are the lessons on the free enterprise system. We got a class pet! Supply donations welcome.

## Our Driving Question for Unit 1:



**How do Entrepreneur's personal traits and the roles they play in society contribute to the free enterprise system?**



# Wellness Center/College & Career

## Mr. Roger Rivera



# SCAIR WEEKLY RECAP

During this week's college and career advising group, we had a discussion on the Cost of Attendance and had an in depth conversation on the various components that make COA including tuition, housing, food, and miscellaneous items. Next week, we will be discussing Financial Aid vs Merit Aid.

## Schedule an Appointment

If you would like to schedule an appointment for college, career, and academic advising, please visit my Calendly page to request an appointment.

**Office Hours are  
Tuesday and Thursday,  
12:30pm-1:30pm**

[Click Here to Schedule  
An Appointment](#)

If you would like to schedule an appointment outside office hours, please email me!



## Contact Information:

Roger Rivera, PPS, APCC  
School Counselor, iLEAD Agua Dulce  
11311 Frascati St, Agua Dulce, CA 91390  
(661) 268-6386  
[Roger.Rivera@ileadaquadulce.org](mailto:Roger.Rivera@ileadaquadulce.org)



CALIFORNIA  
**YOUTH  
LEADERSHIP  
FORUM**  
FOR STUDENTS  
WITH DISABILITIES

**2023**  
July 13-19\*  
Sacramento, CA

\*YLF will be held partly  
virtually and partly in-person.



**DEVELOP YOUR LEADERSHIP SKILLS,  
AND LEARN HOW TO REACH YOUR  
ACADEMIC, CAREER, AND  
INDEPENDENCE GOALS.**

**VIRTUAL SESSIONS ON ZOOM**  
Thursday, July 13 – Saturday, July 15

**IN-PERSON SESSIONS AT CSUS**  
Monday, July 17 – Wednesday, July 19

**MAKE NEW  
LIFETIME FRIENDS!**

Talk with policy makers and educate  
them on ways they can improve the  
lives of young people with disabilities.

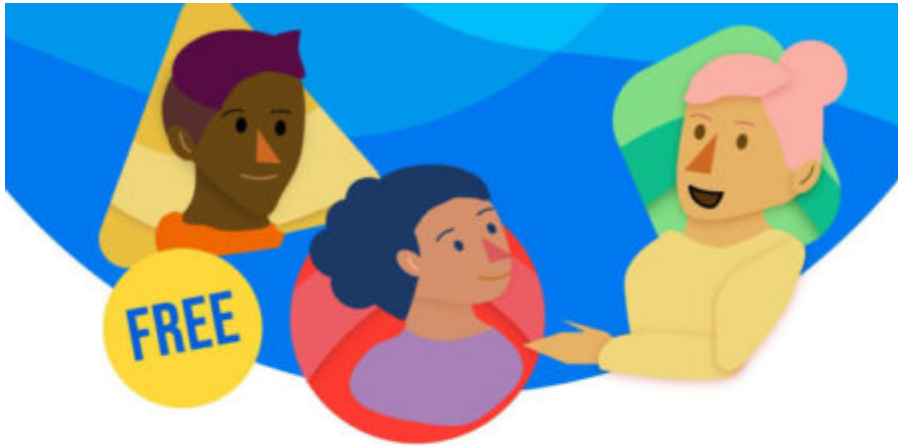


**Application Information Available at:**  
**WWW.DOR.CA.GOV/HOME/YLF**

For additional information and how to complete  
the application, please email or call us at:  
**ylf@dor.ca.gov / 855.894.3436\*\***

\*Date subject to change. \*\*Dial 711 for California Relay Service.





## Mental Health Support for LA County

Get online mental health support 24/7 with on-demand coaching, lessons and more brought to you by the Los Angeles County Department of Mental Health.

Sign up at [lacounty.iprevail.com](https://lacounty.iprevail.com)



PURPOSE - ZEST - GRIT - CRITICAL THINKING - CURIOSITY - OPTIMISM - COLLEGE & CAREER READINESS  
ACADEMIC RIGOR - GROWTH MINDSET - GRATITUDE - SOCIAL INTELLIGENCE - SELF CONTROL

*iADHS est. 2021*