



# Falcon Chronicles

## iLEAD Agua Dulce High School

### Mark Your Calendars



**Th/Fri March 23, 24 →  
12:45-4:00 pm**

**Minimum Days**  
Learner Led Conferences  
(LLCs)

**M → April 3**  
**Field Learning**  
Museum of Tolerance

**M-F → April 3-7**  
Spirit Week

**M-F-M → April 10-17**  
Spring Break

### Musts



Ask your learner about their progress in their courses. They should be done with **Block 7** in their [online course calendar](#).

### High School Informational

Last week we were so excited to greet all of our future high school learners. We thank everyone for joining us to begin the journey of inquiry regarding what the present and future have to hold for our iADHS community. We look forward to year 3 with our founders and early adopters <3

### Learner Led Conferences!

It's exciting to think about the next two weeks of LLC's to celebrate our learning and progress toward ILP goals.

#### *What is the Role of The Parent and Family at an LLC?*

Parents play an important supportive role in this process. The focus of the conference is on learning and growth, not simply a "show and tell" display of work. It is a time for families to "sit beside" their child, listen to and trust their child's assessment of their own learning, and ask good questions. Families may also work with the child to set new goals based on the discussion during the conference.

*Please see your email for the full guide that was sent in previous weeks along with the sign-up genius link.*

# Interdisciplinary → Social & Integrated Sciences

*Dr. Armine Movsisyan Berg*



## Advisory Connections

Mindful Monday → Learner Free Day

TedTalk Tuesdays → Prepare for LLCs

Wellness Wednesday → PSATS

Thoughtful Thursday → Prepare for LLCs

Learner Outcomes: Purpose - College/Career - Grit - Growth Mindset

Habits Focus: #Begin with the end in mind - #6 Synergize

## Grade 9

### Driving Questions

Humanities → How can I design a self-empowering high school experience that prepares me to “show-up” in school and life?

STEAM → How can our understanding of mycology support wellness for humanity and our earth?

Learners conducted self-assessments of their expert presentations and had the opportunity to work toward mastery through the next iteration. We co-created checklists and rubrics for presentations that can be utilized during the next POL. On Tuesday they will present their interviews.

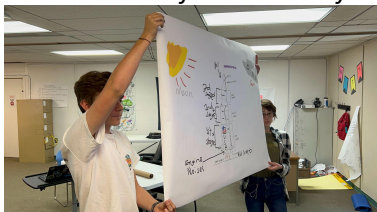


## Grade 10

**Driving Question** - How can I use my 10th Grade experience at iADHS to help discover who I am and who I hope to become?

Humanities Slides - STEAM Slides

Learners used our co-created presentation rubric to self-assess their presentations and conducted reflections on their performance as they work towards mastery of skills and content. Next week they will dive into more chemistry via rocketry and explore the patterns of genocides.



## International Issues - Globalization - Public Policy

We are exploring how tourism and travel have been impacted by globalization using the thinking routine of the 3-2-1 Bridge.

## Table Talk Wonders



**What is the purpose of LLCs? How do they prepare learners for the ‘real world’?**

iLEAD  
Online



VAPA & Language  
Block 7 completed

## After School

Model United Nations  
Th. 3:30-4:30 pm  
SCMUN March 25-26

[Link to iAD Learner Schedule](#)

## Wishlist

1. Outdoor furniture for the outdoor classroom.

# English Language Arts

*Mrs. Elsa Williamson*



We have spent the week working on an essay outline to build up to purposeful writing! We also watched a Ted Ex video on how to pursue our dreams!

**All grades are updated in Brightspace! I highly recommend that everyone reviews their grades and completes missing assignments!**

## Table Talk Wonders

How can our dream  
impact the  
lives of  
others?



# Introduction to Entrepreneurship CTE

## 9th & 10th

*Ms. Veronika Dean* veronika.dean@ileadaguadulce

Learners are researching Social Entrepreneurship and Risk Awareness. Assignments have been posted in Brightspace along with the main presentation requirement for this unit. CHECK BRIGHTSPACE FOR ASSIGNMENTS.

The week of March 20th, we are reviewing how corporations use vision and mission statements to align with ethical practices and market their company to gain consumer trust. Learners will research, document and analyze various mission statements with a focus on social and environmental responsibility commitments and statements. They will then analyze each of the organization's success and profitability. Data will be kept in a workbook application (Google Sheets/Excel) and learners will generate graphs and tables utilizing the application tools.

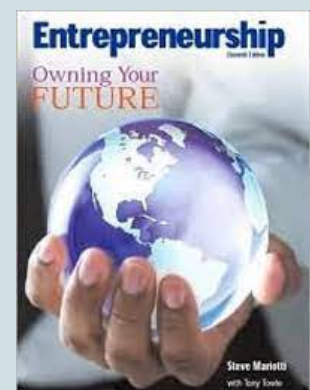


Professional Portfolios include a business/professional vocabulary log using a spreadsheet application. Learners should have 2 entries in their workbooks by now. Resources from the discussions have been posted in Brightspace for any learners absent.



## Social Entrepreneurship & Risk Awareness

How are entrepreneurs expected to conduct business in today's markets and societies. Who are they accountable and responsible to? Where can risks be present?



Learners have access to a physical textbook in class and online via links in BrightSpace.

# Wellness Center/College & Career

## Mr. Roger Rivera



# SCAIR

Hello Everyone! I hope everyone had a wonderful week! This past week, we had the PSAT, LLCS, and some have met for academic advising. Many of you will continue to meet for academic advising in the coming weeks. Next week we will return back to meet on our weekly schedule for our College & Career group.

## PSAT/NMSQT®

**Congratulations to all 9th and 10th grade learners who had participated in the PSAT this Wednesday (3/15)**

**You will receive your scores within 4-6 weeks.**

If you have any questions, contact Mr. Rivera

## Schedule an Appointment

If you would like to schedule an appointment for college, career, and academic advising, please visit my Calendly page to request an appointment.

**Office Hours are Tuesday and Thursday, 12:30pm-1:30pm**

[Click Here to Schedule An Appointment](#)

If you would like to schedule an appointment outside office hours, please email me!

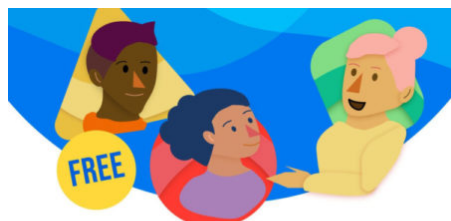


## Contact

### Information:

Roger Rivera, PPS, APCC  
School Counselor, iLEAD Agua Dulce  
11311 Frascati St, Agua Dulce, CA 91390  
(661) 268-6386

[Roger.Rivera@ileadaquadolce.org](mailto:Roger.Rivera@ileadaquadolce.org)



## Mental Health Support for LA County

Get online mental health support 24/7 with on-demand coaching, lessons and more brought to you by the Los Angeles County Department of Mental Health.



PURPOSE - ZEST - GRIT - CRITICAL THINKING - CURIOSITY - OPTIMISM - COLLEGE & CAREER READINESS  
ACADEMIC RIGOR - GROWTH MINDSET - GRATITUDE - SOCIAL INTELLIGENCE - SELF CONTROL  
*iADHS est. 2021*

***Please Note***

***For access to the links above, open the attached PDF file.***