



Falcon Chronicles

iLEAD Agua Dulce High School

Mark Your Calendars



Th → May 18 - 9AM - 1PM

10th Grade Passion Project
Reveal POL

Schedule & [Assessor Links](#)
Family & Friends Welcome

M → May 29 No School
Memorial Day

Musts



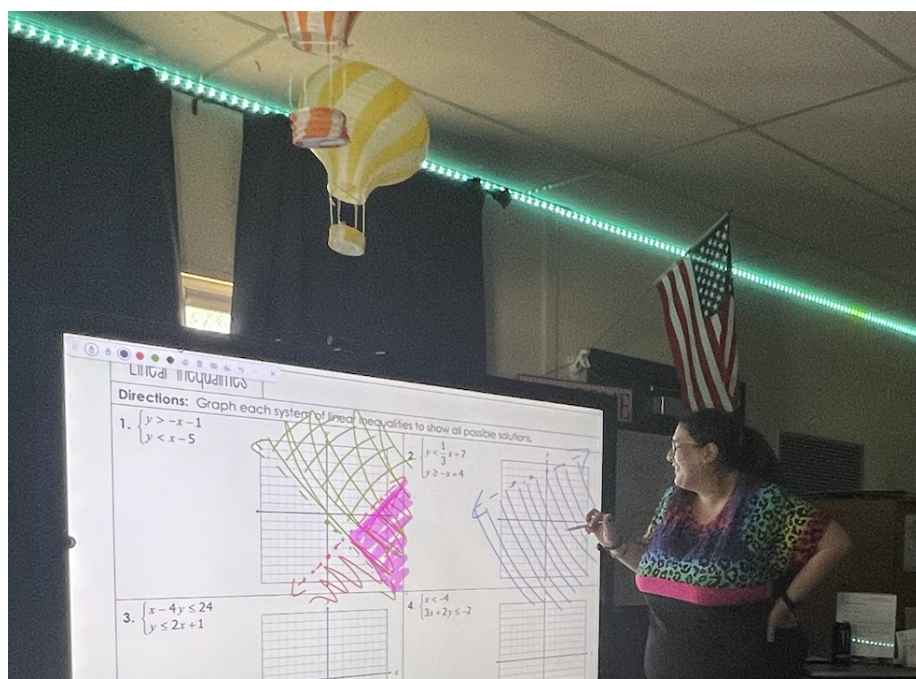
Ask your learner about their progress in their courses. They should be done with

Block 13 in their

[online course calendar](#).

Welcome, Mrs. Sterling Favela!

We are thrilled to welcome Mrs. Favela to the iAD Team with all the great experience, care, zeal, and joy she brings to how she “shows up” for our learners and school!



Interdisciplinary → Social & Integrated Sciences

Dr. Armine Movsisyan Berg



Advisory Connections

Mindful Monday → Implicit Bias

TedTalk Tuesdays → Ted Talk - Desi

Wellness Wednesday → Does Schools Kill Creativity?

Thoughtful Thursday → Socratic Seminar

Learner Outcomes: *Grit, Purpose, Zest*

Habits Focus: #3 PFTF

Grade 9

Driving Questions

Humanities → *How can I design a self-empowering high school experience that prepares me to “show-up” in school and life?*

STEAM → *How can our understanding of mycology support wellness for humanity and our earth?*

This week in Social Science we continued our thematic SPICE review of history with a focus on the 60s. In Science, we explored the complexities of Mitosis and collected data for the Cordycpets labs.

Grade 10

Driving Question - *How can I use my 10th Grade experience at iADHS to help discover who I am and who I hope to become?*

[Humanities Slides](#) - [STEAM Slides](#)

Our Sophomores are preparing for their **Passion Project Reveals** that will take place on Thursday, May 18. We welcome all family and friends to be with us during the POL. Details about the schedule and rubrics can be found by clicking [this link](#). We spent this week editing the reports and rehearsing to gather feedback and revise as we prepare for the reveal.

Table Talk Wonders



Why is it important for humans to be considerate about how we interact with Earth?

iLEAD Online

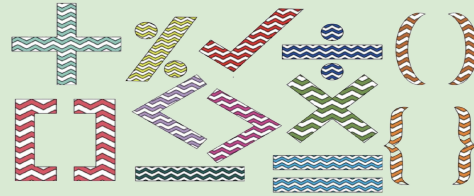


VAPA & Language
Block 13 complete

Schedule
[Link to iAD Learner Schedule](#)

Integrated Mathematics

Mrs. Sterling Favela



Grade 9:

9th grade is continuing our math unit on Relations and Functions. This last week, they undertook graphing and deciphering graphs that related to everyday situations. They also took a quiz that assessed their mastery of relations vs. functions, domain, range, and real-world graphs. Moving forward, this week the learners will be focusing on equations as functions, graphing functions using a table when given the function's equation, function notation, and evaluating functions. Our learners continue to be such joys to work with and I thank you for all you do for them!

Grade 10:

10th grade is continuing our math unit on Systems of Equations and Inequalities. In the past week, they have taken a quiz on the first major chunk of our unit! We are following up this week with a post-quiz review, and they will continue by now focusing on linear inequalities and systems of linear equalities. This is such a wonderful class of young adults and I feel fortunate to work with them. Thank you for all you do for them!



Table Talk

Wonders

A limerick:

$$\frac{12 + 144 + 20 + 3\sqrt{4}}{7} + (5 \times 11) = 9^2 + 0$$

Doesn't look like a limerick to you? Try this:

A dozen, a gross, and a score
Plus three times the square root of four
Divided by seven
Plus five times eleven
Is nine squared and not a bit more.

Fine, fine, we'll kick it up a notch:

Integral zee squared dee zee
From one to the cube root of three
Times the cosine
Of three pi over nine
Is the log of the cube root of e

$$\int_1^{\sqrt[3]{3}} z^2 dz \times \cos \frac{3\pi}{9} = \ln(\sqrt[3]{e})$$

Can rhyming patterns help our brains make connections to concepts that enable us to recall the m more easily in the future?

Riddle of the Week



How do you go from 98 to 720 using just one letter?

Contact Me:

Sterling Favela

Middle School & High School Math Facilitator
Middle School & High School Science Support
iLEAD Agua Dulce

Text: (661) 441-6341

Email: Sterling.Mahler@ileadaguadulce.org

English Language Arts

Mrs. Elsa Williamson



Learners are in the middle of the writing process to articulate their arguments and ideas on pursuing dreams!

All grades are updated in Brightspace! I highly recommend that everyone reviews their grades and completes missing assignments!

Table Talk Wonders

How can our dream impact the lives of others?

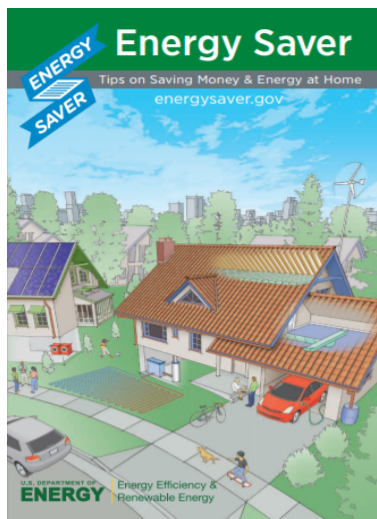


Introduction to Entrepreneurship CTE

9th & 10th

Ms. Veronika Dean veronika.dean@ileadaguadulce

CHECK BRIGHTSPACE FOR ASSIGNMENTS.



This week learners were “hired” to perform their energy auditing services. Our first customer will be our school. Learners have researched how saving on operational costs of an organization contributes to profitability and the “bottom line”. The Energy Savers Booklet was utilized in

preparing a master template of a form to be used for collecting data in their auditing services. Starting Monday, May 15th learners will begin their inspections to check for electricity, water and natural gas use and waste. Daily participation and contributions is being tracked and significantly impacts their final grade for the semester.

Professional Portfolios include a business/professional vocabulary log using a spreadsheet application. Learners should have 2 entries in their workbooks by now. Resources from the discussions have been posted in Brightspace for any learners absent.



Social Responsibility
Who are entrepreneurs' responsible too?
How can entrepreneurs "Do Well by Doing Good"



Learners have access to a physical textbook in class and online via links in BrightSpace.

Wellness Center/College & Career

Mr. Roger Rivera



SCAIR

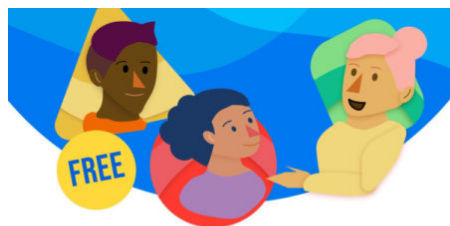
Hello Everyone! I hope everyone had a wonderful week! This past week, we had the PSAT, LLCS, and some have met for academic advising. Many of you will continue to meet for academic advising in the coming weeks. Next week we will return back to meet on our weekly schedule for our College & Career group.

PSAT/NMSQT®

Congratulations to all 9th and 10th grade learners who had participated in the PSAT this Wednesday (3/15)

You will receive your scores within 4-6 weeks.

If you have any questions, contact Mr. Rivera



Mental Health Support for LA County

Get online mental health support 24/7 with on-demand coaching, lessons and more brought to you by the Los Angeles County Department of Mental Health.

Sign up at lacounty.iprevail.com



Schedule an Appointment

If you would like to schedule an appointment for college, career, and academic advising, please visit my Calendly page to request an appointment.

Office Hours are Tuesday and Thursday, 12:30pm-1:30pm

[Click Here to Schedule An Appointment](#)

If you would like to schedule an appointment outside office hours, please email me!



Contact

Information:

Roger Rivera, PPS, APCC
School Counselor, iLEAD Agua Dulce
11311 Frascati St, Agua Dulce, CA 91390
(661) 268-6386

Roger.Rivera@ileadaquadolce.org

PURPOSE - ZEST - GRIT - CRITICAL THINKING - CURIOSITY - OPTIMISM - COLLEGE & CAREER READINESS
ACADEMIC RIGOR - GROWTH MINDSET - GRATITUDE - SOCIAL INTELLIGENCE - SELF CONTROL

iADHS est. 2021

Please Note

For access to the links above, open the attached PDF file.