

Falcon Chronicles

iLEAD Agua Dulce High School

Mark Your Calendars



M-F → May 1-5
Staff Appreciation Week

F → May 5
Play Day

Th → May 18 - 9AM - 1PM
10th Grade Passion Project
Reveal POL
Schedule & [Assessor Links](#)
Family & Friends Welcome

M → May 29 No School
Memorial Day

Musts



Ask your learner about their progress in their courses. They should be done with **Block 12** in their [online course calendar](#).

Jamboree HS Basket



We will be continuing our tradition of the end-of-the-year Jamboree this school year! 🎈🎉🎊
This will be our celebration to close the school year in June. Each class will have a themed basket that will then be part of a silent auction.

*Your **Garden Themed** donations toward the creation of our High School basket would be greatly appreciated!*
*Please send it with your learner to the High School (Room 600). We are collecting the following, which are **due by Thursday, May 11th***

- | | | |
|---------------------|----------------------|----------------------------|
| <i>Wheelbarrow,</i> | <i>plant/seed</i> | <i>garden</i> |
| <i>Gloves,</i> | <i>markers,</i> | <i>gnomes/decor,</i> |
| <i>tools,</i> | <i>hand scrub,</i> | <i>garden flag,</i> |
| <i>seeds,</i> | <i>knee pad,</i> | <i>hose spout,</i> |
| <i>water pail,</i> | <i>sun hat,</i> | <i>spray bottle,</i> |
| | <i>sunscreen,</i> | <i>and/or</i> |
| | <i>water bottle,</i> | <i>your own good idea.</i> |



Interdisciplinary → Social & Integrated Sciences

Dr. Armine Movsisyan Berg



Advisory Connections

Mindful Monday → 54321 Grounding & Socratic About Life with AI

TedTalk Tuesdays → Ted Talk - Blake

Wellness Wednesday → Article - [Sentence - Phrase - Word](#)

Thoughtful Thursday → Affective Communication Strategies

Learner Outcomes: *Grit, Purpose, Zest*

Habits Focus: #3 PFTF

Grade 9

Driving Questions

Humanities → *How can I design a self-empowering high school experience that prepares me to “show-up” in school and life?*

STEAM → *How can our understanding of mycology support wellness for humanity and our earth?*



This week in Social Science we continued our thematic SPICE review of history with a focus on the 50s. In Science, we conducted the next lab in our study of Mycology, wellness, and our earth by inoculating millet with cordyceps.



Grade 10

Driving Question - *How can I use my 10th Grade experience at iADHS to help discover who I am and who I hope to become?*

[Humanities Slides](#) - [STEAM Slides](#)



Our Sophomores are preparing for their **Passion Project Reveals** that will take place on Thursday, May 18. We welcome all family and friends to be with us during the POL. Details about the schedule and rubrics can be found by clicking [this link](#).

We spent this week editing the reports and rehearsing to gather feedback and revise as we prepare for the reveal.

Table Talk Wonders



Why is it important for humans to be considerate about how we interact with Earth?

iLEAD Online



VAPA & Language
Block 12 complete

Schedule

[Link to iAD Learner Schedule](#)

English Language Arts

Mrs. Elsa Williamson



Learners are in the middle of the writing process to articulate their arguments and ideas on pursuing dreams!

All grades are updated in Brightspace! I highly recommend that everyone reviews their grades and completes missing assignments!

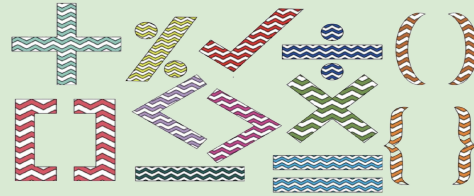
Table Talk Wonders

How can our dream impact the lives of others?



Integrated Mathematics

Mrs. Sterling Favela



Grade 9:

9th grade is currently studying our math unit on Relations and Functions, which has led our learners to an understanding of domain and range, the “x” and “y” values, respectively. We have also dived into various ways to represent relations, through tables, mapping, and graphing, as well as how to tell the difference between functions and relations in their various forms. This week, they are continuing their delve into Relations and Functions by studying real-world graphs, which apply mathematical concepts to everyday scenarios. They will be practicing how to graph various scenarios and identify the proper graphs given various scenarios. They will also have a quiz this week that will enable them to reflect on their knowledge and understanding of all they have learned so far in this unit.

Grade 10:

10th grade is currently studying a math unit on Systems of Equations and Inequalities. They have learned how to solve systems of equations by graphing and substitution, and will have a quiz on their knowledge this week. They are continuing their study by learning the elimination method and how to analyze word problems to solve for the system, and will have a quiz on their understanding next week. Moving forward, the unit will focus on linear inequalities.



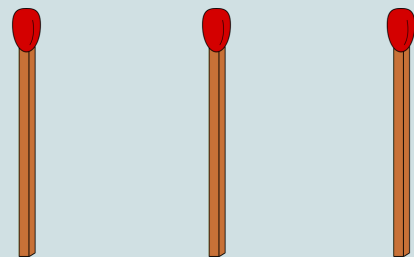
Table Talk Wonders

Many young learners believe that math is not often used in daily life; what are some ways you currently use math in your daily life?

Riddle of the Week



How can you make the number six using only these three matchsticks without cutting them?



Contact Me:

Sterling Favela

Middle School & High School Math Facilitator
Middle School & High School Science Support
iLEAD Agua Dulce

Text: (661) 441-6341

Email: Sterling.Mahler@ileadaguadulce.org

Introduction to Entrepreneurship CTE

9th & 10th

Ms. Veronika Dean veronika.dean@ileadaguadulce

CHECK BRIGHTSPACE FOR ASSIGNMENTS.

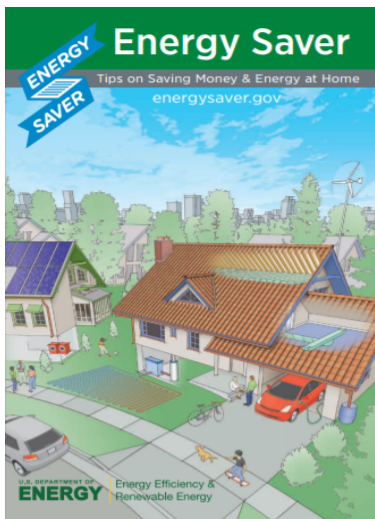
This week learners practiced business communication and correspondence with an “invitation” email

offering their energy auditing services. Our first target customer will be our school.

This week learners have been preparing a presentation to “pitch” to prospective clientele. Learners have researched how saving on operational costs of an organization contributes to profitability and the “bottom line”. The Energy Savers Booklet was utilized in

preparing a master template of a form to be used for collecting data in their auditing services. The learners made and implemented suggestions for the master template.

Professional Portfolios include a business/professional vocabulary log using a spreadsheet application. Learners should have 2 entries in their workbooks by now. Resources from the discussions have been posted in Brightspace for any learners absent.



Social Entrepreneurship & Risk Awareness

How are entrepreneurs expected to conduct business in today's markets and societies? Who are they accountable and responsible to? Where can risks be present?



Learners have access to a physical textbook in class and online via links in BrightSpace.

Wellness Center/College & Career

Mr. Roger Rivera



SCAIR

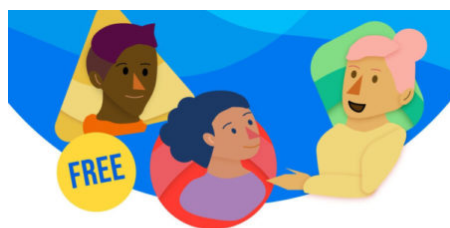
Hello Everyone! I hope everyone had a wonderful week! This past week, we had the PSAT, LLCS, and some have met for academic advising. Many of you will continue to meet for academic advising in the coming weeks. Next week we will return back to meet on our weekly schedule for our College & Career group.

PSAT/NMSQT®

Congratulations to all 9th and 10th grade learners who had participated in the PSAT this Wednesday (3/15)

You will receive your scores within 4-6 weeks.

If you have any questions, contact Mr. Rivera



Mental Health Support for LA County

Get online mental health support 24/7 with on-demand coaching, lessons and more brought to you by the Los Angeles County Department of Mental Health.

Sign up at lacounty.iprevail.com



Schedule an Appointment

If you would like to schedule an appointment for college, career, and academic advising, please visit my Calendly page to request an appointment.

Office Hours are Tuesday and Thursday, 12:30pm-1:30pm

[Click Here to Schedule An Appointment](#)

If you would like to schedule an appointment outside office hours, please email me!



Contact

Information:

Roger Rivera, PPS, APCC
School Counselor, iLEAD Agua Dulce
11311 Frascati St, Agua Dulce, CA 91390
(661) 268-6386

Roger.Rivera@ileadaquadolce.org

PURPOSE - ZEST - GRIT - CRITICAL THINKING - CURIOSITY - OPTIMISM - COLLEGE & CAREER READINESS
ACADEMIC RIGOR - GROWTH MINDSET - GRATITUDE - SOCIAL INTELLIGENCE - SELF CONTROL

iADHS est. 2021

Please Note

For access to the links above, open the attached PDF file.